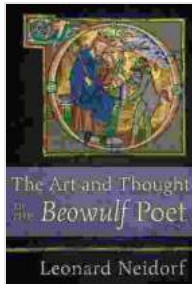


# The Art and Thought of the Beowulf Poet: Exploring the Anglo-Saxon Epic



**The Art and Thought of the "Beowulf" Poet** by Sudha Bhuchar

★★★★☆ 4 out of 5

Language : English

File size : 1573 KB

Text-to-Speech : Enabled

Screen Reader : Supported

Print length : 49 pages

Paperback : 306 pages

Item Weight : 11.4 ounces

Dimensions : 5.25 x 0.69 x 8 inches



:

The epic poem Beowulf, an enduring masterpiece of Anglo-Saxon literature, stands as a testament to the artistic prowess and intellectual depth of its anonymous author, known as the Beowulf Poet. This essay will delve into the remarkable artistry and profound thought that permeate the Beowulf epic, exploring its intricate structure, timeless themes, and enduring legacy in English literature.

## **The Art of the Beowulf Poet:**

### **Intricate Structure and Narrative Technique:**

The Beowulf Poet displays exceptional craftsmanship in the structure and narrative technique of the epic. The poem unfolds in a carefully crafted sequence of events, each episode contributing to the overall narrative arc.

The poet skillfully employs flashbacks, foreshadowing, and parallelisms to create a complex and engaging story.

Moreover, the poet's use of formulaic language, kennings (metaphorical phrases), and alliteration adds a distinctive rhythmic and thematic dimension to the poem. These elements enhance the memorability and impact of the story, making it both accessible and resonant with Anglo-Saxon audiences.

### **Vivid Characterization and Complex Relationships:**

The characters in *Beowulf* are not merely archetypes but complex individuals with distinct personalities and motivations. The poet presents Beowulf as a paragon of heroic virtues, yet also explores his moments of vulnerability and human frailty. Other characters, such as Hrothgar, Grendel, and Unferth, are similarly developed, their actions and interactions adding depth and nuance to the narrative.

The relationships between characters are equally complex. Loyalty, betrayal, honor, and kinship play significant roles in shaping the events of the epic. The poet explores the tensions between personal desires and societal expectations, as well as the consequences of moral choices.

### **The Thought of the Beowulf Poet:**

#### **Universal Themes and Timeless Values:**

Beyond its captivating story and artistic merit, *Beowulf* also contains profound philosophical and moral themes that resonate with audiences of all ages. The poem explores the nature of heroism, the struggle against evil, the inevitability of death, and the power of reputation.

Through the character of Beowulf, the poet examines the complexities of heroism and the sacrifices it entails. The epic also delves into the nature of good and evil, presenting a nuanced portrayal of Grendel and his monstrous kin as both fearful adversaries and symbols of the darkness within humanity.

### **Anglo-Saxon Values and Cultural Heritage:**

Beowulf is deeply rooted in the values and beliefs of Anglo-Saxon society. Honor, loyalty, and bravery are extolled as virtues, while treachery and cowardice are condemned. The poem also reflects the importance of oral tradition and the role of the poet as a guardian of cultural history.

The poet incorporates numerous references to Anglo-Saxon mythology and history, weaving them into the narrative to create a rich tapestry of cultural heritage. These elements add depth and authenticity to the epic, connecting it to the broader fabric of Anglo-Saxon life and thought.

### **Legacy and Influence:**

#### **Enduring Impact on English Literature:**

Beowulf has had a profound and lasting impact on English literature. The poem's themes, characters, and narrative techniques have inspired countless writers and poets throughout the centuries. Its influence can be seen in works as diverse as J.R.R. Tolkien's *The Lord of the Rings* and Seamus Heaney's *Beowulf: A New Translation*.

The epic has also played a significant role in shaping the study of Anglo-Saxon literature and medieval studies. Its status as one of the most important texts from the period has made it a cornerstone of academic

research and analysis, contributing to our understanding of Anglo-Saxon culture and thought.

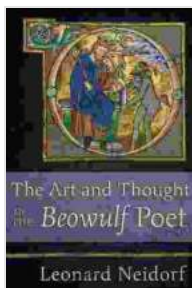
### **Relevance in Contemporary Society:**

Despite its ancient origins, Beowulf continues to resonate with audiences today. Its timeless themes of heroism, morality, and the human condition remain relevant in contemporary society. The epic offers insights into the complexities of human nature and the challenges we face in an ever-changing world.

Through its evocative language, vivid characters, and profound philosophical explorations, Beowulf invites us to reflect on our own values, choices, and the enduring power of the human spirit.

:

The Beowulf Poet stands as a master craftsman and visionary thinker whose art and thought continue to captivate and inspire audiences centuries after the epic's creation. The poem's intricate structure, complex characters, and timeless themes make it a work of enduring literary merit. Its Anglo-Saxon roots and cultural significance add an invaluable dimension to our understanding of medieval literature and the human experience. Beowulf remains a testament to the enduring power of storytelling and the profound insights it offers into the complexities of our world.



### **The Art and Thought of the "Beowulf" Poet** by Sudha Bhuchar

★★★★☆ 4 out of 5

Language : English

File size : 1573 KB

Text-to-Speech : Enabled

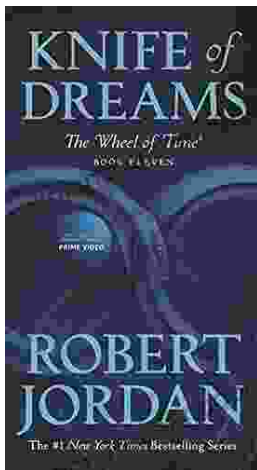
Screen Reader : Supported

Print length : 49 pages

Paperback : 306 pages  
Item Weight : 11.4 ounces  
Dimensions : 5.25 x 0.69 x 8 inches

FREE

DOWNLOAD E-BOOK



## Unveiling Eleven of the Wheel of Time: A Journey Through Epic Fantasy

In the vast and intricate tapestry of Robert Jordan's legendary fantasy series, the Wheel of Time, Eleven stand as pivotal figures, their destinies entwined...



## Ebony Jay Rice: A Rising Star in the Entertainment Industry

Ebony Jay Rice is a force to be reckoned with in the entertainment industry. As a multi-talented actress, singer, dancer, and producer, she has captivated audiences with...